

## Installation Procedure for Safety Valve and Glide-Ring Kent F Series Hammers, KF12 to KF45

It is not usually necessary to remove or re-seal the Safety Valve on a Kent KF12 to KF45 Hammer. If maintenance does become required, the following special procedure must be followed for proper fit of the glide-ring and proper installation of the assembly in the hammer.

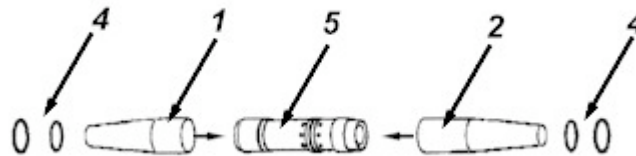
*→ Proper fit and proper installation are critical to the operation of the Safety Valve. Be sure to have the special re-sizing tool available before beginning any service on the Safety Valve!*

### Installation Tool Parts:

Item	Part Number	Description	Remarks
1	K090011 01352	Mandrel (Short)	The straight section is shorter than Item 2
2	K090011 01353	Mandrel (Long)	The straight section is the longer of the two.
3	K090011 01354	Re-Sizing Sleeve	
4	KF22 13332	Glide-Ring	The set of two pieces, Items A1 and A2 together
5	KF22 13335	Sleeve	The main body of the Safety Valve, Item B

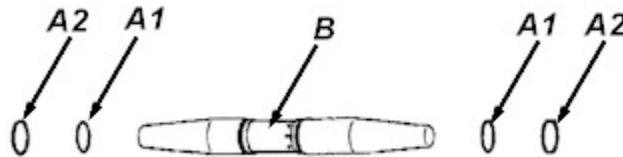
### Installation Procedure:

- Slip the two mandrel pieces (1 and 2) over the ends of the sleeve (5). The mandrel pieces are of different lengths in their straight sections. The longer one should be used on the longer end of the sleeve, and the shorter one is to be used on the opposite end.

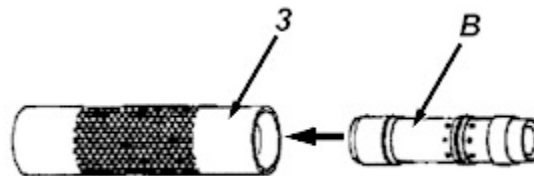


## Installation Procedure for Safety Valve and Glide-Ring, Continued.

- Slide the o-ring (A1) and then the Teflon seal (A2) over the end of the mandrel and then into the groove in the sleeve (B). The same procedure should be used on both ends of the sleeve: O-ring first, Teflon seal second.



- Installation of the o-ring and seal will cause them to stretch. If the outer diameter of the seal is larger than the diameter of the sleeve itself, re-sizing is required prior to re-installation of the sleeve. Insert the sleeve (B) into the re-sizing tube (3), and allow it to sit for 2 to 3 minutes.



- Remove the sleeve from the re-sizing tube, and check the glide-ring for proper fit. If the outer diameter of the seal is still larger than the diameter of the sleeve itself, additional re-sizing is required prior to re-installation of the sleeve.
- Re-sizing of the glide-ring will always be required whenever the Safety Valve has been disassembled, and the sleeve has been removed from the hammer. Avoid disassembling the Safety Valve if at all possible. It does not normally require servicing. Re-sizing tools are available from KENT's engineering department on special request. Question regarding this procedure and regarding the Safety Valve itself should be directed to KENT's Product Support Group.