

## **KENT PEDESTAL**

Kent's new pedestal units with 360° base rotation are built from the ground up to help you achieve maximum productivity in today's most demanding job circles. Custom designed from 16 to 32 feet, these reliable, powerful performers are ideal for use in mining, quarry and industrial applications, including vessel cleanout. Used in conjunction with Kent Hydra-Pak Compactors, the pedestal units are also ideally suited for use at waste transfer stations to achieve maximum compaction and load density in haul trucks. This results in a significant reduction in operating costs due to greater load efficiency.

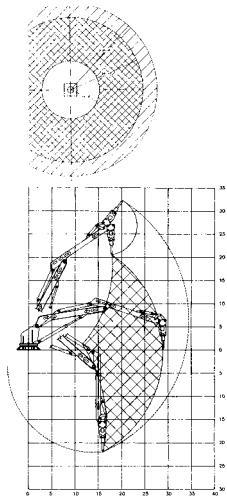
Besides dramatically increasing your work radius, Kent's 360° rotational base provides other time and cost-saving advantages. Because the load is carried and dispersed over the entire base, pin-wearing problems are eliminated. Fewer moving components also mean less wear and tear overall to minimize repairs and downtime.

Kent's excavator-style boom features tubular sections designed to withstand the dynamic loading generated by today's powerful hammers. For outstanding job versatility, modular construction allows various boom components and hammers to be interchanged using common mounting pins.

Kent's new pedestal units are the epitome of operational ease. A powerful electrohydraulic control package provides complete, almost effortless control of the boom and breaker with two multi-functional joysticks. Proportional valves allow complete control over unit speeds. Less hydraulic hosing also makes the pedestal unit easy to retrofit.



# KENT PEDESTAL



Calculated in accordance with the AEM Measuring Guide for Tool Energy Rating for Hydraulic Breakers developed by the Mounted Breaker Manufacturers Bureau of the Association of Equipment Manufacturers. This Mounted breaker is certified to comply with the above standard.

Kent's policy is one of continual improvement. Specifications may change between printing.



## SPECIFICATIONS

### Kent Pedestal Mounted Boom Attachments and Power Units

BOOM MODEL	LENGTH (FT.)	ATTACHMENT	POWER UNIT
PM-16HD	16	KF 12Qt or smaller	5034
PM-16EHD	16	KF 12Qt	5034
PM-16EHD	16	KF 19Qt - KF 22Qt	6040 / 7548
PM-20HD	20	KF 9 or smaller	5034
PM-20EHD	20	KF 12Qt	5034
PM-20EHD	20	KF 19Qt - KF 22Qt	6040 / 7548
PM-24HD	24	KF 9 or smaller	5034
PM-24EHD	24	KF 12Qt	5034
PM-24EHD	24	KF 19Qt - KF 22Qt	6040 / 7548
PM-28HD	28	KF 12Qt or smaller	6040
PM-28EHD	28	KF 12Qt - KF 19Qt	6040
PM-28EHD	28	KF 22Qt	7548
PM-32EHD	32	KF 12Qt - KF 19Qt	6040
PM-32EHD	32	KF 22Qt	7548

## SPECIFICATIONS

### Kent Pedestal Mounted Boom Power Units

MODEL	ELECTRIC MOTOR	PUMP TYPE	PUMP FLOW	RESERVOIR CAPACITY
4025	40 hp	Piston	25 gpm	60 gal.
6034	60 hp	Piston	34 gpm	100 gal.
7545	75 hp	Piston	45 gpm	120 gal.

Kent Power Units are equipped with 10 micron return filter, pressure line filter, and case drain filter.

### Features and Benefits:

- All units are computer designed and engineered to meet customers' specific applications
- Choose from heavy duty or extra heavy duty booms to handle hammers up to 4,000 pounds
- Control stations and power units are matched to the boom, breaker and application to maximize production
- Power packages are available in three models to suit job applications and operational needs
- Choose from a full line of Kent hydraulic hammers with wide ranging breaking forces to provide outstanding versatility
- Available options include insulated, climate-controlled, sound-proof cabs; centralized lubrication systems; and waist-mounted operational controls
- Available options include insulated, climate-controlled, sound-proof cabs; centralized lubrication systems; and waist-mounted operational controls.

*All Kent hammers come complete with Kent's exclusive Pro-Pak for ease of installation. The Pro-Pak includes hose whips, mounting hardware, standard working steel tool kit and operating manual at no additional charge.*



711 Lake Street • Kent, OH 44240  
330-673-5826 • Fax: 330-677-1616  
Toll Free: 1-800-527-2282 (East Coast)  
1-800-624-1616 (West Coast)

[www.kentdemolition.com](http://www.kentdemolition.com)